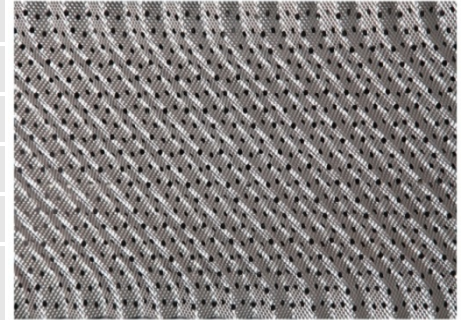


# Packing- RMP S 250

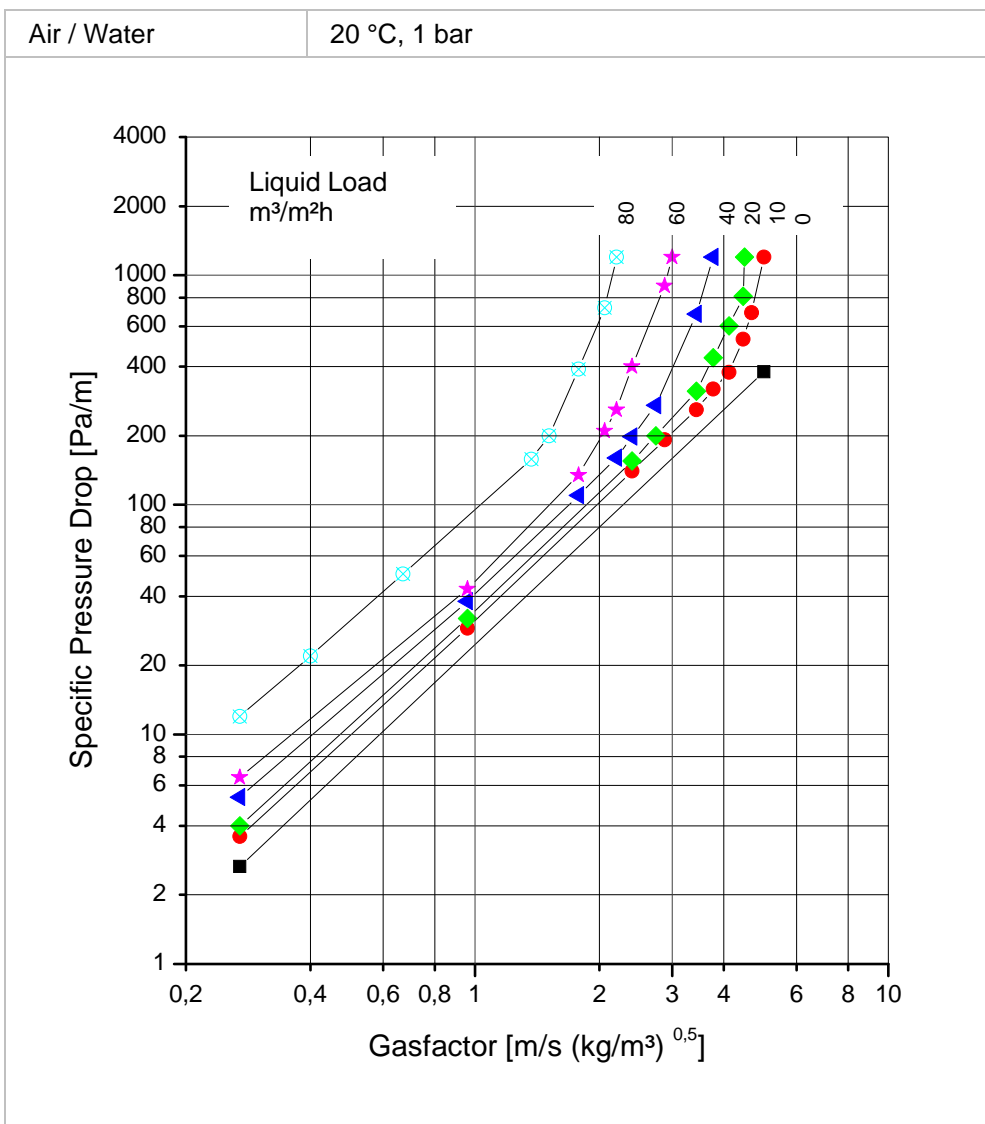


## Physical data

Weight	100 kg/m <sup>3</sup>
Thickness	0,1 mm
Surface area	250 m <sup>2</sup> /m <sup>3</sup>
Void fraction	98,9%
Material	carbon-steel
Available material	stainless steel and others on request



## Pressure drop



ME8211 11.12.13

All information presented herein is believed to be accurate and reliable but does not constitute a warranty or performance guarantee on part of RVT Process Equipment GmbH.

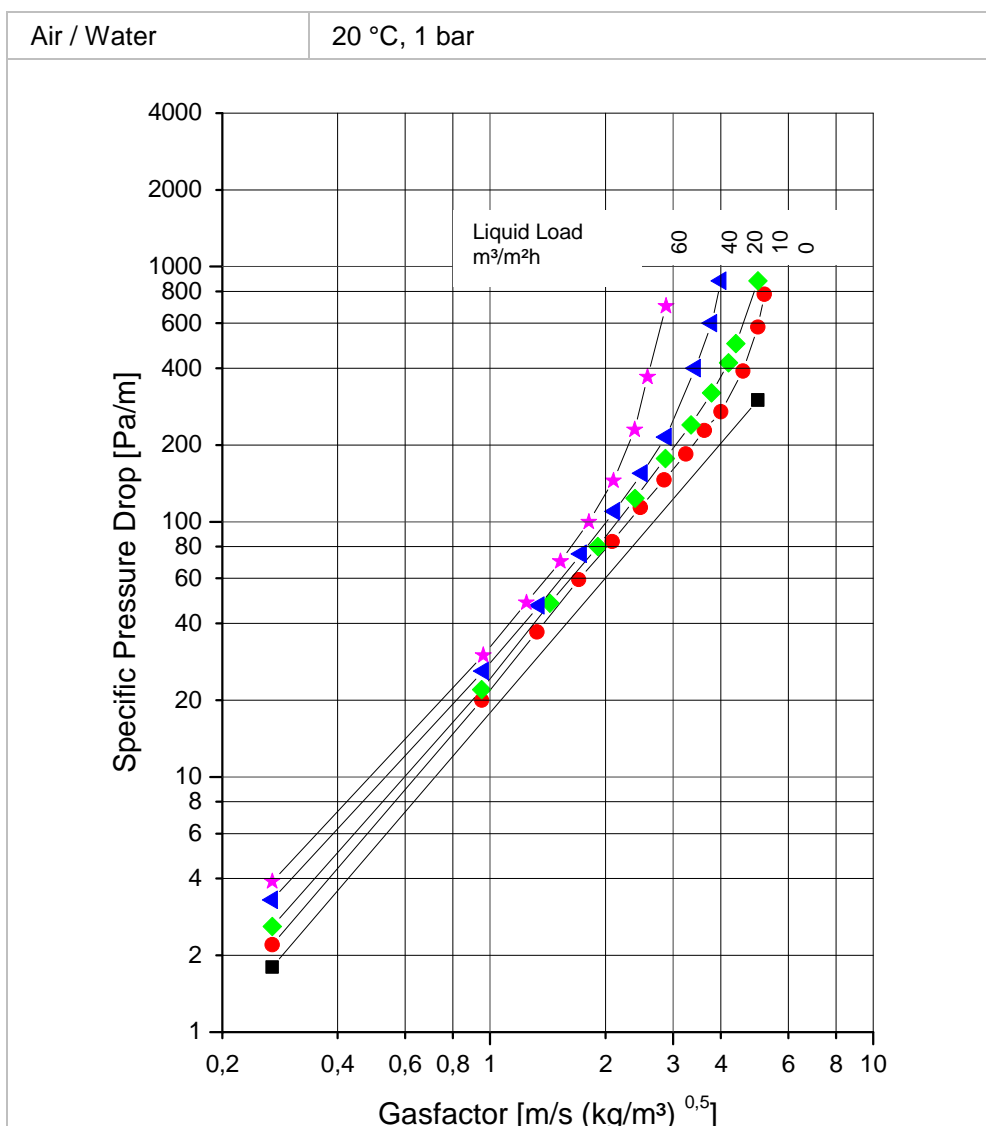
# Packing- RMP SP 250



## Physical data

Weight	106 kg/m <sup>3</sup>
Thickness	0,1 mm
Surface area	250 m <sup>2</sup> /m <sup>3</sup>
Void fraction	98,9%
Material	stainless steel
Available material	carbon-steel, stainless steel and others on request

## Pressure drop



ME8113 02.11.15

All information presented herein is believed to be accurate and reliable but does not constitute a warranty or performance guarantee on part of RVT Process Equipment GmbH.